



## Stony Ridge Condominiums Bldg. 4

**\$129,900**

10481 E Stony Ridge Cr. Unit 25 (Lower), WI Sister Bay

Municipality: Village of Sister Bay  
County: Door  
Tax ID: 1810008312824  
School District: Gibraltar  
Zoning: Multi-family  
Style: 8-Unit  
Exterior: Vinyl, Stone



Home Size: 1,237 Lower,  
1,351 Upper  
Sq. ft. finished  
Garage: 1 Stall, Attached  
Basement: N/A  
Type of Heat: LP Gas, Forced Air  
Central Air: Yes  
Fireplace: Yes  
Appliances Incl.: NA  
Municipal Water: Yes  
Sanitary Sewer: Yes

# Bedrooms: 2  
# Bathrooms: 2 full  
Living Room: 18' x 17'  
Kitchen: 16' x 14'  
Bedroom 1: 16' x 11'  
Bedroom 2: 14' x 14'

Directions: Highway 42 to Sister Bay. Right on Country Walk to Koessl Ln or to Cherrywood Ln.

Remarks: Beautiful new condominiums built by Coach Builders. Custom Cabinets, large trim package, warm colors, designer lighting, open concept, one car attached garages, fireplace, 2 x 6 construction, separate utilities, rough-in for washer and dryer in unit, 9' ceilings on first floor, vaulted ceilings on second floor.

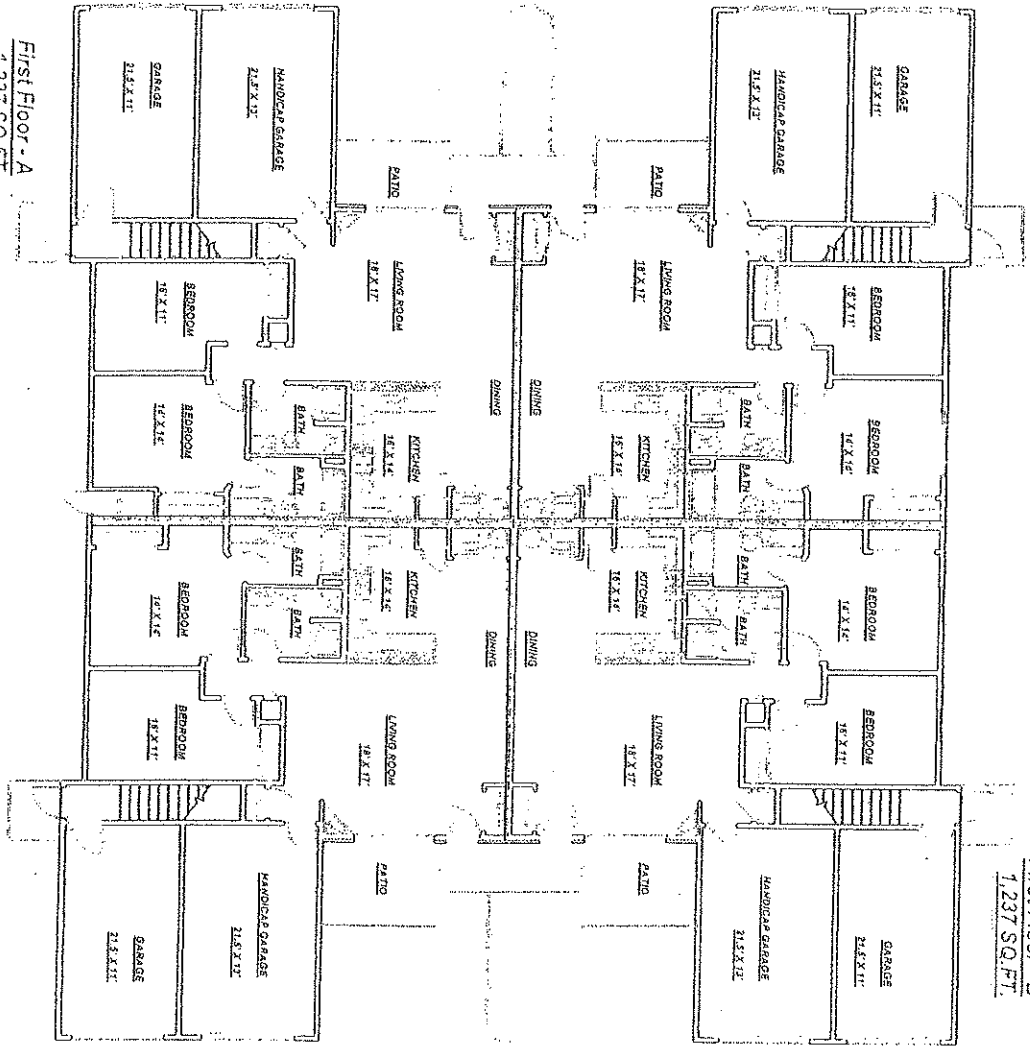
*The accuracy of the information contained in this data sheet is not warranted and is subject to change without notice.*

[www.MyCoachHome.com](http://www.MyCoachHome.com)

Revised 2/3/12

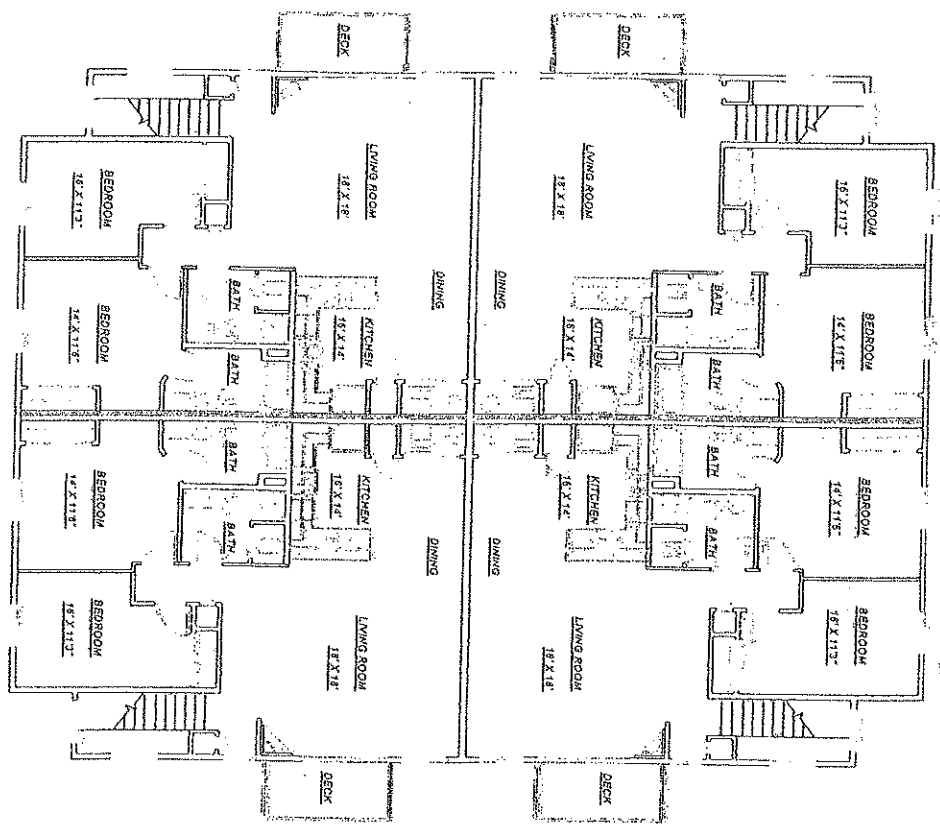
Landmark Real Estate & Development, Inc. ■ Suite 300 ■ 320 Main Avenue ■ De Pere, WI 54115  
Phone 920-337-9566 ■ FAX 920-337-9568  
[www.LandmarkNeighborhoods.com](http://www.LandmarkNeighborhoods.com)

First Floor - A  
1,237 SQ. FT.



First Floor - B  
1,237 SQ. FT.

Second Floor - A  
1,351 SQ. FT.



Second Floor - B  
1,351 SQ. FT.