

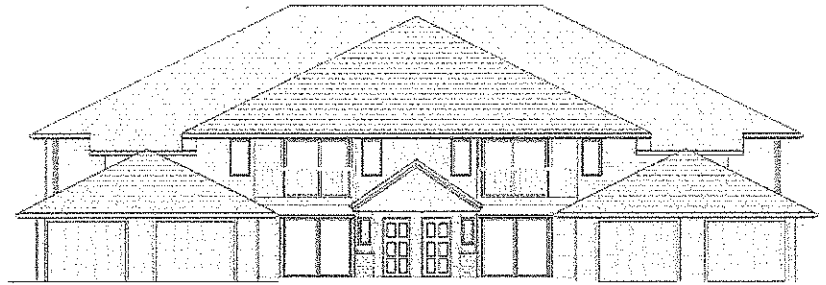


Stony Ridge Condominiums Bldg. 6

\$129,900

10514 Koessl Lane & 2410 Cherrywood Lane, WI Sister Bay

Municipality: Village of Sister Bay
 County: Door
 Tax ID: 1810008312824
 School District: Gibraltar
 Zoning: Multi-family
 Style: 8-Unit
 Exterior: Vinyl, Stone



Home Size: 1,237 Lower,
 1,351 Upper
 Sq. ft. finished
 Garage: 1 Stall, Attached
 Basement: N/A
 Type of Heat: LP Gas, Forced Air
 Central Air: Yes
 Fireplace: Yes
 Appliances Incl.: NA
 Municipal Water: Yes
 Sanitary Sewer: Yes

Bedrooms: 2
 # Bathrooms: 2 full
 Living Room: 18' x 17'
 Kitchen: 16' x 14'
 Bedroom 1: 16' x 11'
 Bedroom 2: 14' x 14'

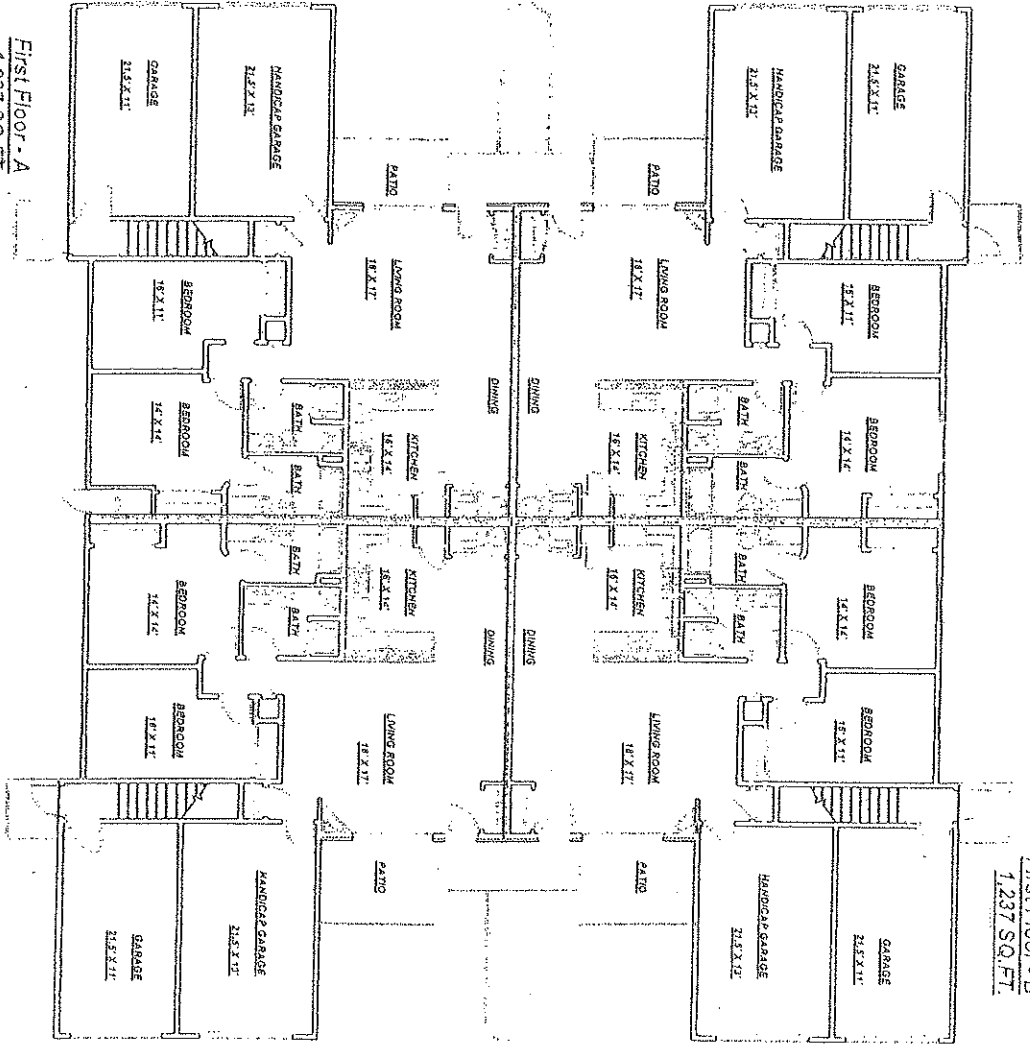
Directions: Highway 42 to Sister Bay. Right on Country Walk to Koessl Ln or to Cherrywood Ln.

Remarks: Beautiful new condominiums built by Coach Builders. Custom Cabinets, large trim package, warm colors, designer lighting, open concept, one car attached garages, fireplace, 2 x 6 construction, separate utilities, rough-in for washer and dryer in unit, 9' ceilings on first floor, vaulted ceilings on second floor.

The accuracy of the information contained in this data sheet is not warranted and is subject to change without notice.

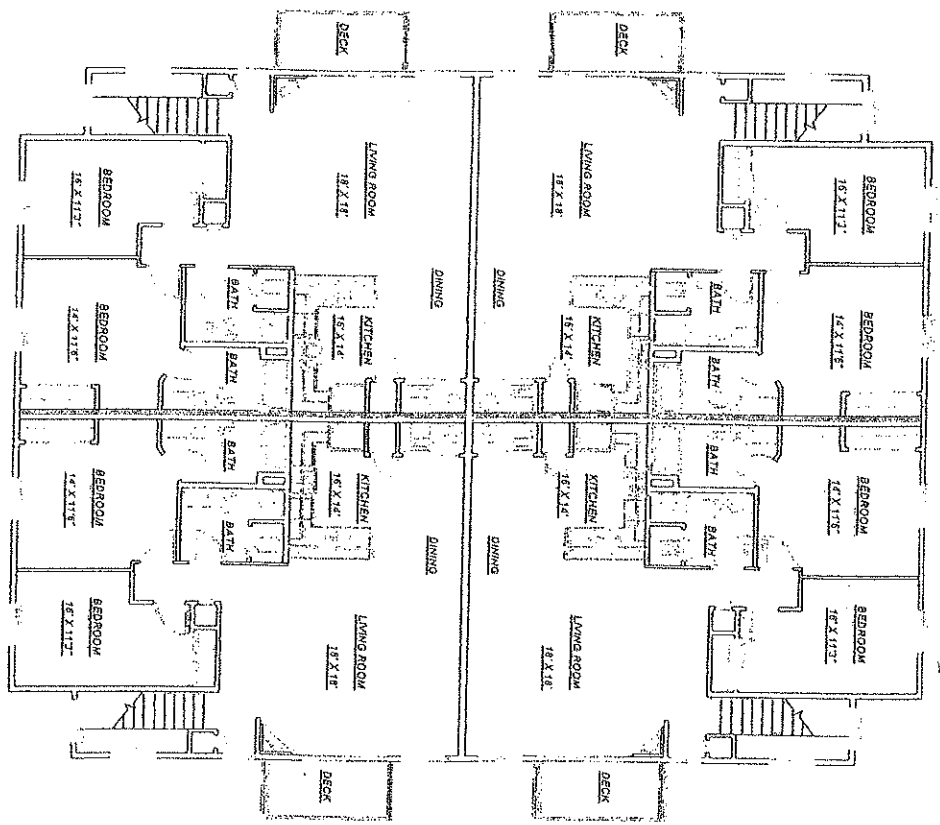
Revised 12/15/11

First Floor - A
1,237 SQ.FT.



First Floor - B
1,237 SQ.FT.

Second Floor - A
1,351 SQ.FT.



Second Floor - B
1,351 SQ.FT.