



SPENCER'S CROSSING

PRICE LIST

<u>LOT #</u>	<u>PRICE</u>	<u>LOT #</u>	<u>PRICE</u>	<u>LOT #</u>	<u>PRICE</u>
1	\$29,900	12	SOLD	23	\$35,900
2	\$29,900	13	\$35,900	24	\$35,900
3	\$29,900	14	SOLD	25	SOLD
4	\$29,900	15	SOLD	26	SOLD
5	\$29,900	16	SOLD	27	SOLD
6	\$29,900	17	SOLD	28	SOLD
7	\$29,900	18	SOLD	29	SOLD
8	SOLD	19	SOLD	30	SOLD
9	SOLD	20	\$35,900	31	\$35,900
10	SOLD	21	\$35,900		
11	SOLD	22	\$35,900		

SITE DESCRIPTION: Beautiful fully-improved large lots. Country setting yet close to everything.

LOCATION / DIRECTIONS: Hwy. 29 west to Riverdale Drive. Right on Riverdale. Left on County C (Shawano Ave.) to Gaibrelles Gate.

ZONING:	Residential	SCHOOL DISTRICT:	Howard Suamico
LOT SIZE RANGE:	Varies	MUNICIPALITY/COUNTY:	Village of Howard/Brown
MLS AREA #:	110	TAXES:	TBD
SANITARY SEWER:	Municipal – Yes	STREET:	By Developer
WATER SUPPLY:	Municipal – Yes	SIDEWALKS:	Yes
STORM SEWER:	Municipal – Yes	CURB & GUTTER:	Yes
UTILITIES:	Natural gas, Electric, Telephone, Cable	HOMEOWNERS ASSOC.:	No

BUILDING REQUIREMENTS: All homes must have minimum 7/12 roof pitch.
 A 2 stall attached garage minimum.
 Ranch Homes 1800 sq. ft minimum
 2-Story Homes 2200 sq. ft. minimum
 All homes shall have 100% masonry and/or cement board siding exterior

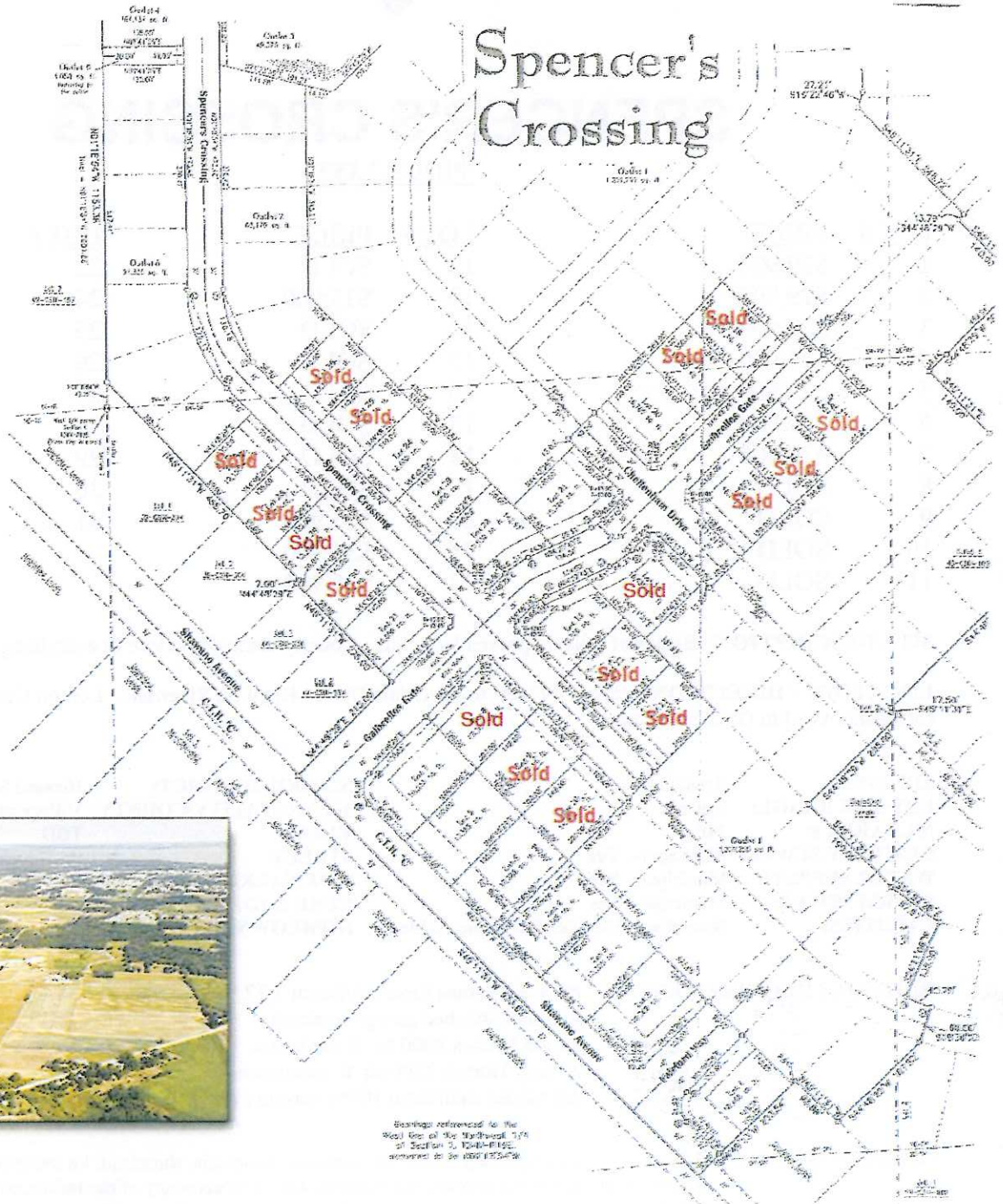
OTHER REMARKS: Individual site data regarding easements, wetlands, floodplain, shoreland, lot dimensions, etc. per recorded plat. Seller is a licensed real estate broker. **The accuracy of the information contained in this data sheet is not warranted and is subject to change without notice.**

PLAT MAP – SEE BACK

Revised August 5, 2011

Spencer's Crossing

Escape to your new home on one of these Beautiful large lots in the Village of Howard. Perfectly located just northwest of Green Bay, You will enjoy the best of both worlds - the Convenience of city living and the quiet luxury of the country.



Bearings referenced to the
 West line of the Maryland Turn
 of Section 2, T24N-R19E,
 according to Deed 1855-78