



Trailside

As you can see, the possibilities are almost limitless at Trailside.

This convenient setting will please and delight your family and friends ... and more importantly make them feel at home.



Located in East De Pere.
Take Broadway South which turns into CTH PP to Rockland Road (approximately 3 miles).
Subdivision is located on the South side of Rockland road.



Landmark Real Estate and Development
320 Main St., Suite 300, De Pere, WI 54115
920-337-9566 Fax: 920-337-9568
www.LandmarkNeighborhoods.com



Trailside

an unequalled experience in family living.



Trailside

an unequalled experience in family living.

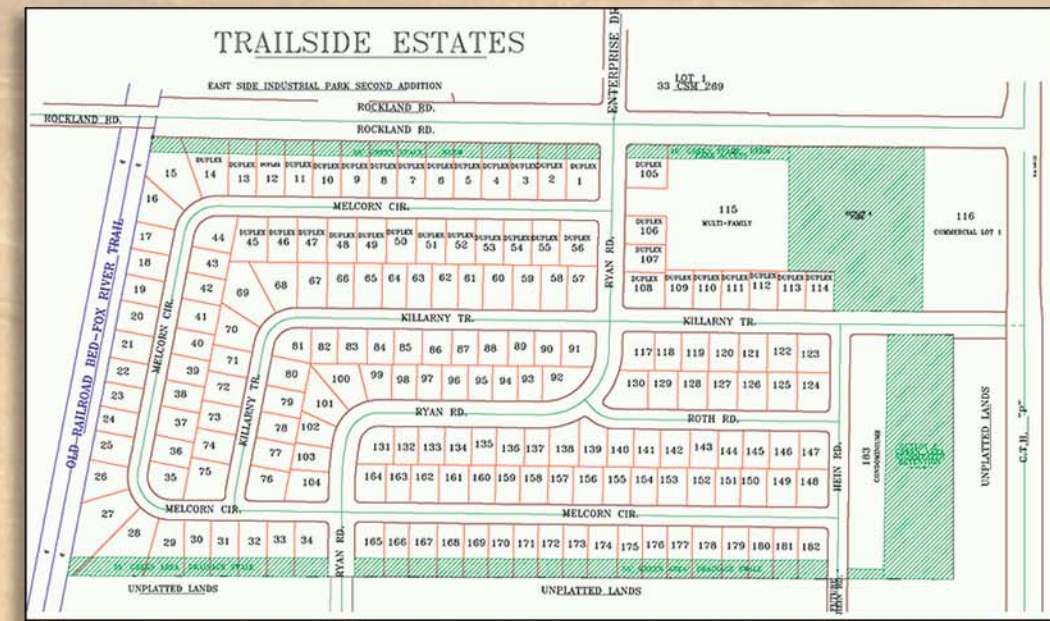
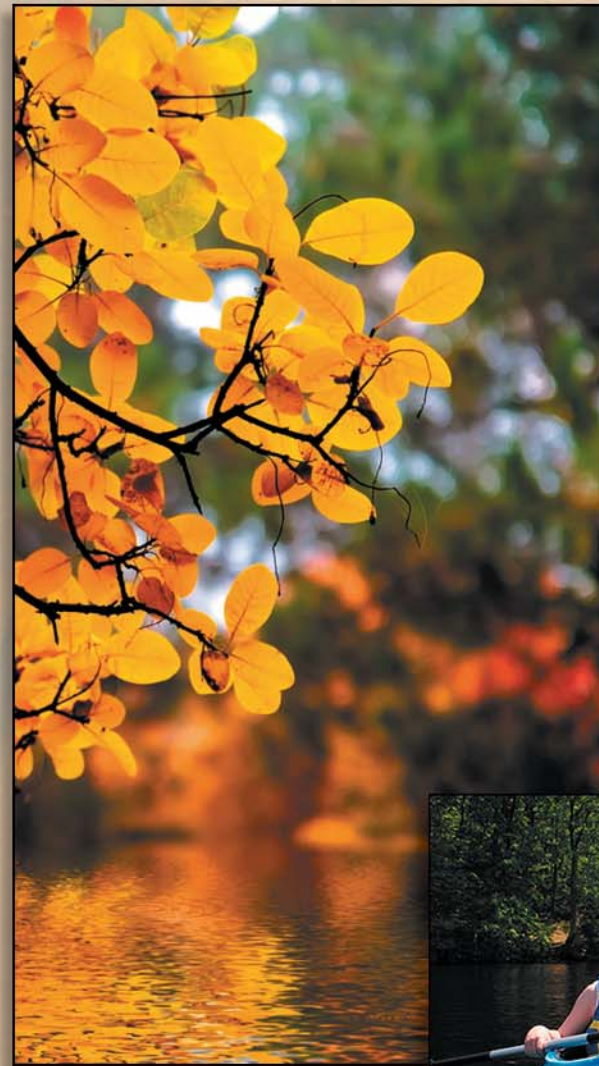
leisure ...

For the fitness minded you'll find jogging and hiking trails. A nearby boat launch provides family boating fun on the Fox River.

Winding natural trails invite your family to stroll amid a picturesque setting.

Winter brings the crisp cool air and turns walking trails into cross-country trails.

Friends and neighbors will enjoy the nearby park with sledding hill.



Tuscan Townhomes

Envision care free living while you savor your morning coffee as the sun rises gently over this waterfront property. Our Tuscan Townhomes feature:

- ~ 2 Bedrooms*
- ~ 2 Full Baths*
- ~ 1,204 - 1,245 square feet*



We can help you customize your dream home.



Creating neighborhoods you can truly call home...