

26

Landmark Real Estate & Development

Keith Garot & Venessa Willis ■ 920-337-9566 ■ www.landmarkneighborhoods.com

2011 Parade of Homes & Condos

HOME FACTS

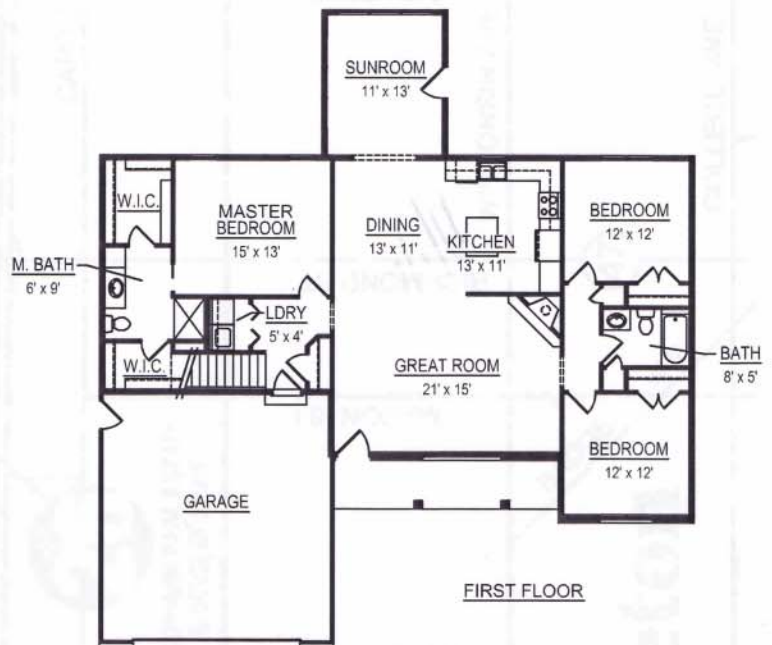
- Style: ranch
- Total Square Footage: 1,767
- Bedrooms: 3
- Bathrooms: 2
- Decorated and furnished
- Landscaped
- For Sale



Copyright © Landmark Real Estate & Development

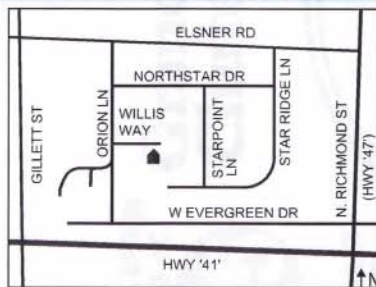
HIGHLIGHTS

- Craftsman inspired
- Open concept layout
- Split-bedroom design
- Custom maple cabinets
- Six-panel doors
- 9' ceilings throughout
- Masonry exterior with custom two-toned garage door
- Bright and sunny all-season sunroom
- Custom stone fireplace
- From light fixtures, to sinks and flooring, this home has loads of detail throughout

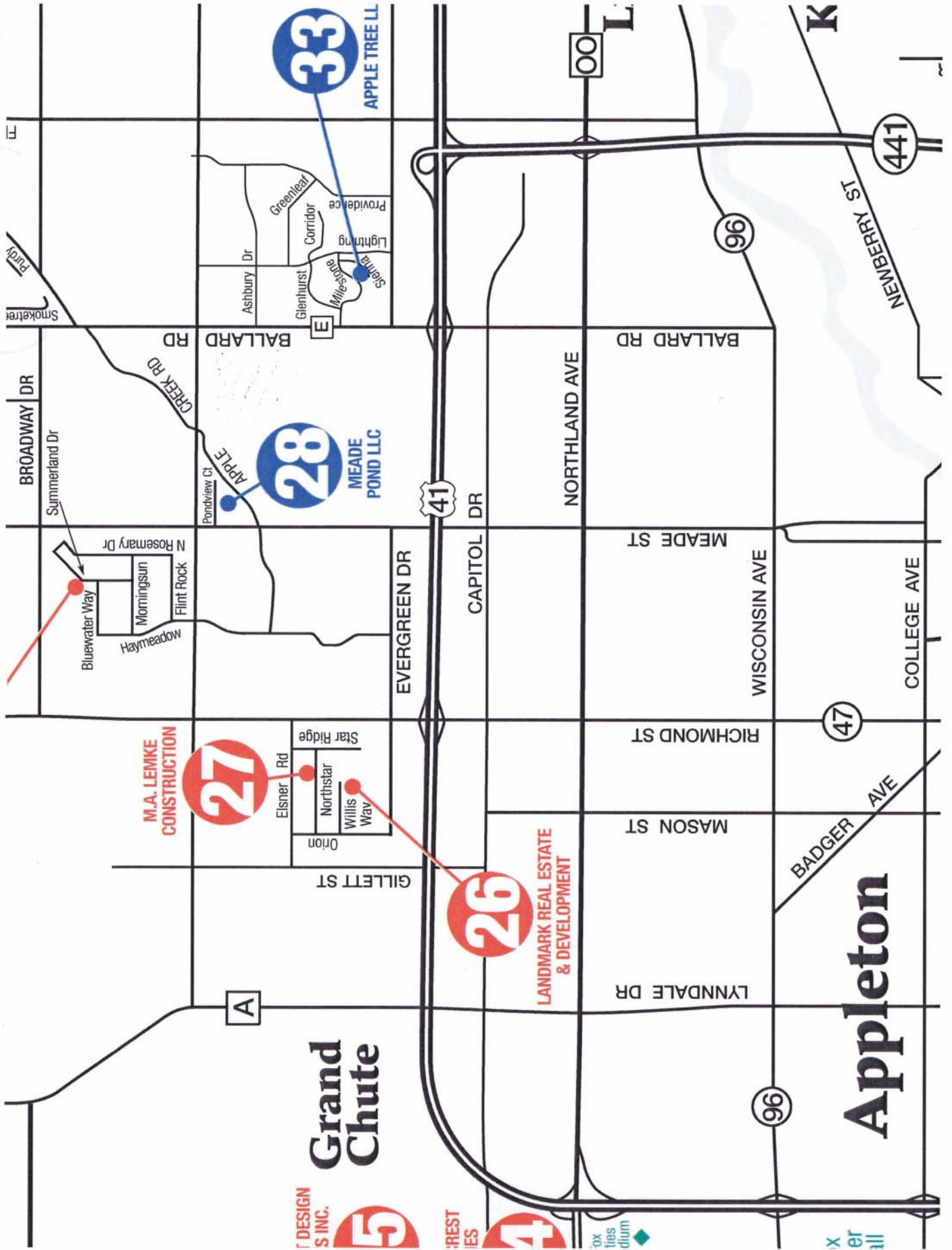


1065 W. Willis Way, Grand Chute

From Hwy. 41, exit north on Richmond St. (Hwy. 47) – west on Evergreen Dr. – north on Orion Ln. – east on Willis Way



Appleton



Grand Chute

M.A. LEMKE CONSTRUCTION

27

28

33

26

LANDMARK REAL ESTATE & DEVELOPMENT

DESIGN S INC.

REST IES

ox ties dium

x er ill